

# Cast Alloy Steel H&C Class Mill Chains



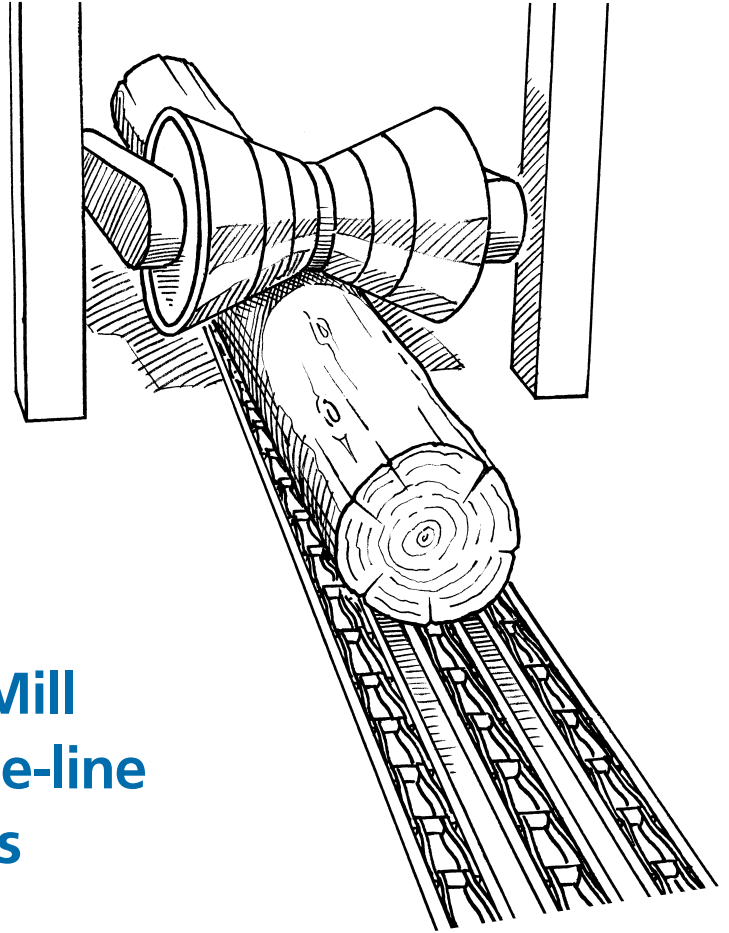
**I'ANCO's cast alloy steel H&C class mill chains** *are designed to operate under the rigors of refuse, material, and log conveying. In severe-service applications, these chains will absorb severe impacts, shock loading, and extremely high service loads. These characteristics will increase your chain life.*

**W**hile designing and manufacturing this new line of alloy chains, I'ANCO addressed the specific problems encountered in severe-service applications. We focussed on high impact, severe abrasion, and pin to barrel wear that most alloy chains must repeatedly endure. But we didn't stop there. We also considered all the abuse that regularly occurs in most industrial situations. The end result – a new alloy line that can perform in industry's most rugged and challenging applications.

**NO MORE**

- Broken Welds
- Split Barrels
- Channelled Pin Holes in Legs
- Excessive Barrel Wear
- Short Chain Life

To combat these problems, which can occur in most industrial situations, I'ANCO has developed a cast through-hardened alloy steel chain link, a precision machined through-hardened pin, and close tolerance control to meet the demands of tough severe-service applications.



## I'ANCO's Cast Alloy Steel Mill Chains offer you top-of-the-line quality at affordable prices



*With 60 years of experience, I'ANCO manufactures quality, cost-effective products.*

*Our extensive selection of job-specific products are in stock for your convenience.*

### *Design Advantages*

#### **BARREL**

#### **Oval Design**

- heavy cross section of material for added wear resistance
- can run in either direction
- has inner center relief for grease reservoir
- has grease hole

#### **SIDE BAR**

**Oblong for more cross-sectional area. Wear shoe on all drag links**

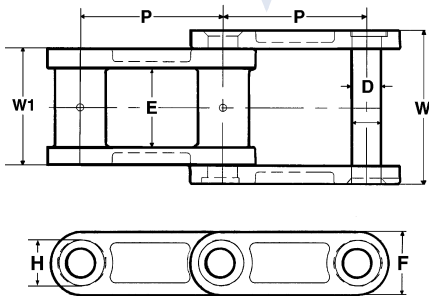
- heavy cross section and increased strength
- more bearing surface support for the pin to increase life
- Top & bottom wear shoes on our drag chain links increase load-bearing surface area as well as acting as pusher lugs

#### **PIN**

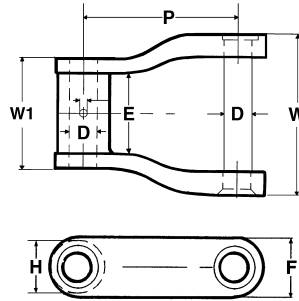
**Machined & fully through hardened**

- Typically we use 4140 which has high strength and impact resistance
- machine finished for on-size tolerance
- "D" head and rivet end are countersunk to prevent wear

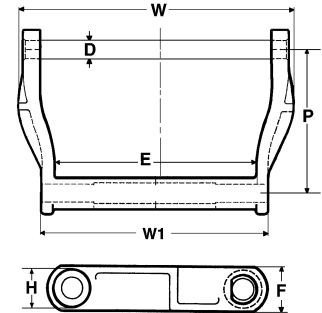
# Cast Alloy Steel H&C Class Mill Chains



"C" Class Chain



"H" Class Chain



Drag Chain

I'Anco Chain #	Average Pitch "P"	Average Ultimate Strengths (lbs.)	Maximum Working Load (lbs.)	D	E	F	W	W1	H	Weight per foot (approx.)
H124-S	4.00"	81,000	13,500	3/4"	1-1/2"	1-9/16"	4-3/4"	2-15/16"	1-7/16"	11 lbs.
H106	6.000"	111,000	18,600	7/8"	1-7/8"	2"	4-5/8"	3-1/8"	2"	12 lbs.
H132-S	6.050"	145,000	24,200	1"	3"	2"	6-1/2"	4-1/2"	1-3/4"	18 lbs.
C132-S	6.050"	145,000	24,200	1"	3"	2"	6-1/2"	4-1/2"	1-3/4"	18 lbs.
C157-S	6.050"	226,000	37,600	1-1/4"	2-3/4"	2-3/4"	6-1/2"	5"	2"	25 lbs.
HD 132-S	6.050"	183,000	30,500	1-1/8"	2-3/4"	2-1/4"	6-3/4"	4-3/8"	2-1/4"	25 lbs.
H110-S	6.00"	81,000	13,500	3/4"	9"	1-1/2"	12-5/8"	10-5/8"	1-1/2"	18 lbs.
HD480-S	8.000"	145,000	24,200	1"	11"	2"	15-1/2"	12-7/8"	2"	33 lbs.

Note: Maximum working load is based on a safety factor of six.



60 years of experience

## Metallurgy

**LINK** is typically cast in 8630 alloy steel and through-hardened to BHN 350/380. This material demonstrates an optimum combination of high ultimate strength and resistance to shock loading.

**PIN** Typically we use 4140 fully through-hardened alloy steel bar with a BHN range of 360/400. This alloy and heat treatment are designed to give high strength and impact resistance.

See I'ANCO's catalogue for a complete line of cast integral attachments.



## *Manufacturing Process*

I'ANCO's casting process ensures a top-quality casting, free from stress and residual strains that are common in most welded links. The homogeneous grain structure of our cast product produces a stronger structure than a weldment, since it features superior strength with no welds, or weld-affected zones that are prone to failure.

I'ANCO uses machine-finished pins to maintain close-fitting tolerances between our chain's pin and barrel hole. The tight-tolerance fit (typically 0.025") that we employ ensures the maximum possible bearing surface between these two components. This specialized manufacturing method not only increases the chain's ability to convey material, it also increases the service life of the chain.

The inner barrel bore of our H&C class alloy links is recessed to create a grease-retaining cavity. We also pregrease all our chain during assembly to further increase our chain's service life and performance.



At I'ANCO, we have done all that we can to manufacture a chain for refuse and materials handling that will perform to your highest expectations. This product has been rigorously tested in actual field conditions over many years. With this impressive experience behind us, we can guarantee that our mill chains will improve your bottom line.



I'ANCO PRODUCTS LTD. specializes in the design, manufacture, and sale of heavy-duty, severe-service conveyor chains and sprockets. I'ANCO has an extensive background in heavy-duty, severe-service materials handling for conveyor applications. The flagship of our product line is austenitic manganese steel chains and sprockets.

I'ANCO PRODUCTS LTD. also manufactures a complete line of logging rigging for our customers in the forest harvesting industry. I'ANCO logging fittings have an established track record for strength, durability, and reliability, based on strict in-house quality control procedures and process testing at every stage of our manufacturing process. At I'ANCO we carry a large selection of parts and fittings for virtually every logging application. Using high-grade cast alloy steel, we work closely with our customers to develop new ideas and improve our existing product lines.

Our head office as well as our two primary operating facilities are located in Surrey, BC. Our design, assembly, and storage facilities are also located in Surrey. I'ANCO PRODUCTS LTD. works closely with Highland Foundry to develop and produce our cast products.

**For more information and a copy of our full catalogue of products, contact:**

I'ANCO PRODUCTS LTD., Surrey, BC Canada  
Phone: (604) 882-1602 • Fax: (604) 882-1603

**I'ANCO'S Alloy  
Steel Chain  
GUARANTEED  
TO PERFORM**

**I'ANCO Alloy  
Steel Chain  
EXCELLENT FOR  
HIGH-ABRASION,  
HIGH-SPEED &  
HIGH-LOAD APPLI-  
CATIONS**