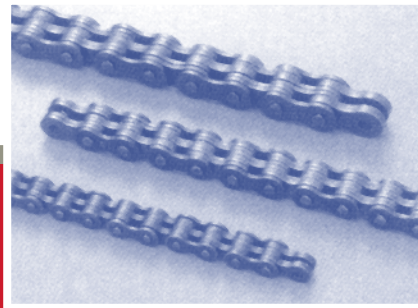
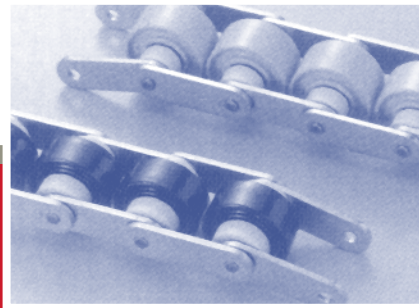
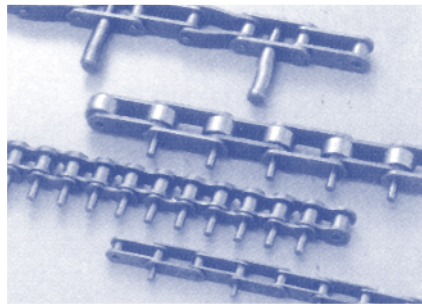
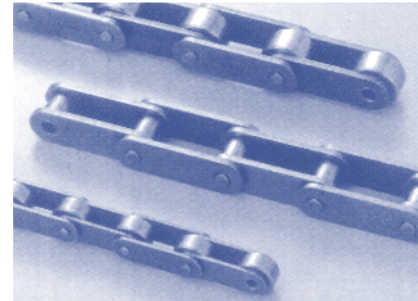
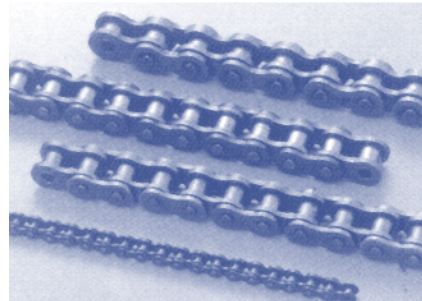


CONTACT US



LANGLEY
BRITISH COLUMBIA

27474 Gloucester Way, Langley BC, Canada V4W 4A1
† 604.882.1602 f 604.882.1603 toll free 1.800.324.1244

SAINT-NICOLAS
QUEBEC

11194 Chem. Industriel #108 Saint-Nicolas, QC G7A 1B1
† 418.834.5116 f 418.834.5901 toll free 1.888.650.6090

ATLANTA
GEORGIA

3411 Novis Pointe, Acworth, GA, USA 30101
† 678.797.0777 f 678.797.5554 toll free 1.877.941.1500

www.connexusindustries.com

Printed in Canada 924

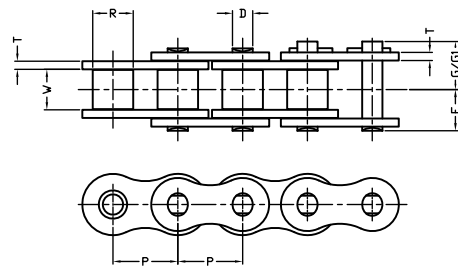
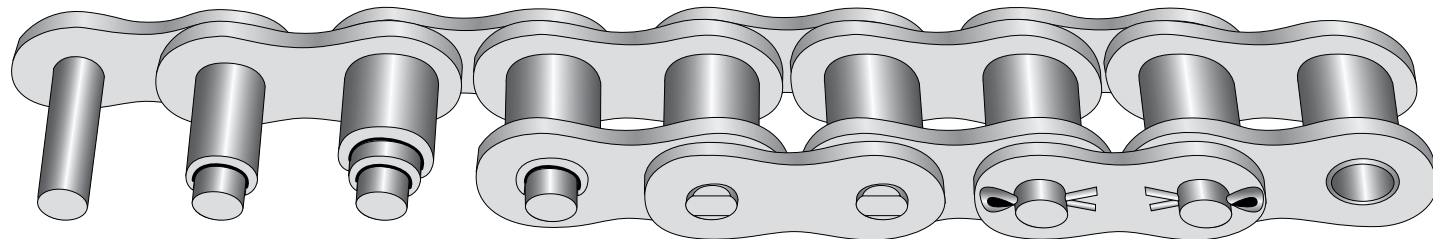
DURALink
PLATINUM SERIES ROLLER CHAIN

Roller Chain

DURA LINK - PLATINUM SERIES ROLLER CHAIN

DURALink

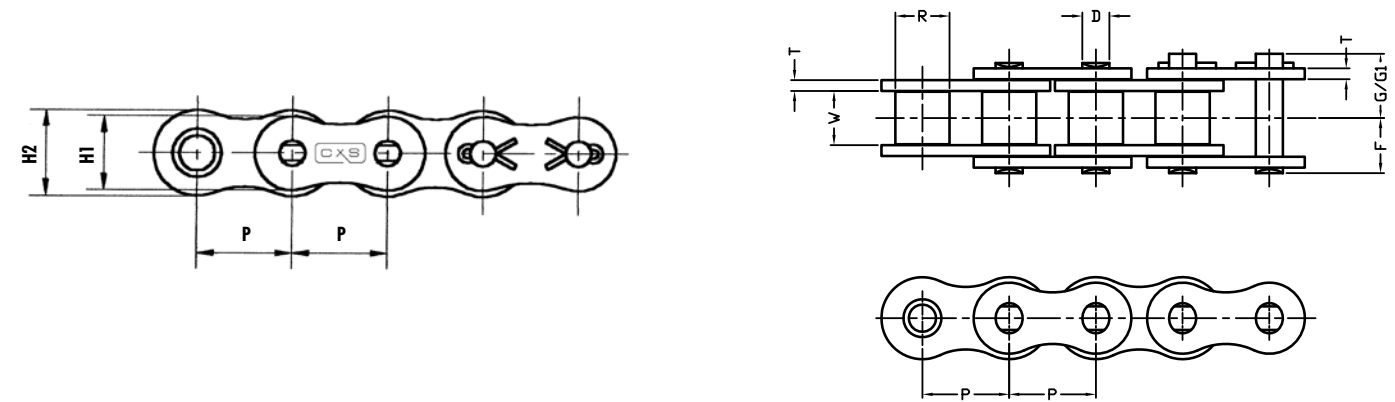
PLATINUM SERIES ROLLER CHAIN



- Wide waist designed side plates for greater fatigue resistance
- Manufactured with Solid Bushings, Solid Rollers and Through Hardened Pins
- Greater maximum allowable load than standard roller chain
- For applications that have high speed and high shock loads

CONNEXUS ANSI #	Pitch P	Roller Width W	Roller Dia R	Link Plates			Pin				Transverse PITCH C	Avg Ult Strength Lbs/Ft	Approx Weight Lbs/Ft
				Height H1	H2	Thickness T	Dia D	Lengths F G					
60 60-2	0.750	0.500	0.469	0.610	0.689	0.094	0.234	0.492 0.945	0.557 1.004	0.606 1.059	0.898	10,648 21,296	0.967 2.035
80 80-2	1.000	0.625	0.625	0.803	0.941	0.122	0.313	0.634 1.205	0.699 1.268	0.740 1.323	1.154	18,876 37,620	1.612 3.533
100 100-2	1.250	0.750	0.750	0.976	1.185	0.154	0.375	0.791 1.496		0.909 1.614	1.409	28,607 57,216	2.512 5.038
120 120-2	1.500	1.000	0.875	1.181	1.378	0.185	0.437	0.992 1.886		1.126 2.020	1.787	37,510 75,020	4.150 8.230
140 140-2	1.750	1.000	1.000	1.425	1.654	0.220	0.500	1.075 2.037			1.925	52,030 104,060	5.032 9.962
160DL 160-2DL 160-3DL	2.000	1.250	1.125	1.630	1.890	0.252	0.562	1.281 2.430 3.585		1.467 2.618 3.770	2.303 2.303	66,500 137,100 199,650	6.770 13.430 20.130
180DL 180-2DL 180-3DL	2.250	1.406	1.406	1.842	2.134	0.280	0.687	1.402 2.697 3.992		1.642 2.937 4.232	2.591 2.591	89,771 179,520 269,280	9.220 18.326 27.426
200DL 200-2DL 200-3DL	2.500	1.562	1.562	2.047	2.374	0.315	0.781	1.531 2.941 4.35		1.811 3.22 4.63	2.819 2.819	116,490 232,650 349,140	11.312 22.470 33.622
240DL 240-2DL 240-3DL	3.000	1.875	1.875	2.457	2.850	0.374	0.937	1.858 3.587 5.315		2.157 3.886 5.614	3.457 3.457	167,420 334,620 502,040	16.509 32.817 49.125

STAINLESS STEEL STANDARD CHAIN



	304SS	316S (NS)
Corrosion Resistance	Good	Superior
Temperature Range	(-40F - +750F)	(-40F - +750F)
Magnetism	Slight	No
Speed	230'/min	230'/min
Max Allowable Bearing Pressure	1420 psi	1420 psi

- **Stainless Steel Chains** are manufactured from AISI type 304SS steel

- These chains are ideal for acidic or alkaline environments or chains are exposed to water

- Chains feature excellent resistance to corrosion and extreme temperature ranges (Temperature Range : -40 F ~ +750 F)

- Also available from factory are 316SS (NS) for non magnetic and/or superior wear resistance is a requirement

* Rollerless Chains

Connexus ANSI #	Pitch P	Roller Width W	Roller Dia R	Link Plates			Dia D	Pin			Max Allow Load Lbs/Ft	Approx Weight Lbs/Ft
				Height H1	H2	Thickness T		Lengths F G G1				
25-SS *	0.250	0.125	0.130	0.197	0.228	0.030	0.091	0.150	0.189	-	26	0.09
35-SS *	0.375	0.188	0.200	0.299	0.354	0.047	0.141	0.228	0.276	0.299	60	0.22
40-SS	0.500	0.313	0.312	0.402	0.465	0.059	0.156	0.325	0.366	0.394	100	0.42
50-SS	0.625	0.375	0.400	0.512	0.583	0.079	0.199	0.398	0.459	0.496	154	0.68
60-SS	0.750	0.500	0.469	0.610	0.689	0.094	0.234	0.492	0.557	0.606	230	0.98
80-SS	1.000	0.625	0.625	0.803	0.941	0.122	0.313	0.634	0.699	0.740	396	1.69
100-SS	1.250	0.750	0.750	0.976	1.185	0.154	0.375	0.791		0.909	572	2.51
120-SS	1.500	1.000	0.875	1.181	1.378	0.185	0.437	0.992		1.126	858	4.08